

Neck Pillow

Facilities using this Pattern are:

Fargo, Minneapolis, and St Cloud VAHCS – Fergus Falls and Minneapolis Vets Home

(as always contact facility to be sure they are in need before spending your \$\$ and time)

Needed:

½ yard of Fabric plus ½ yard of contrasting fabric or 2 pieces 18x20-inches

Polyester Fiberfill

Thread Needle to hand stitch closing

Sewing machine

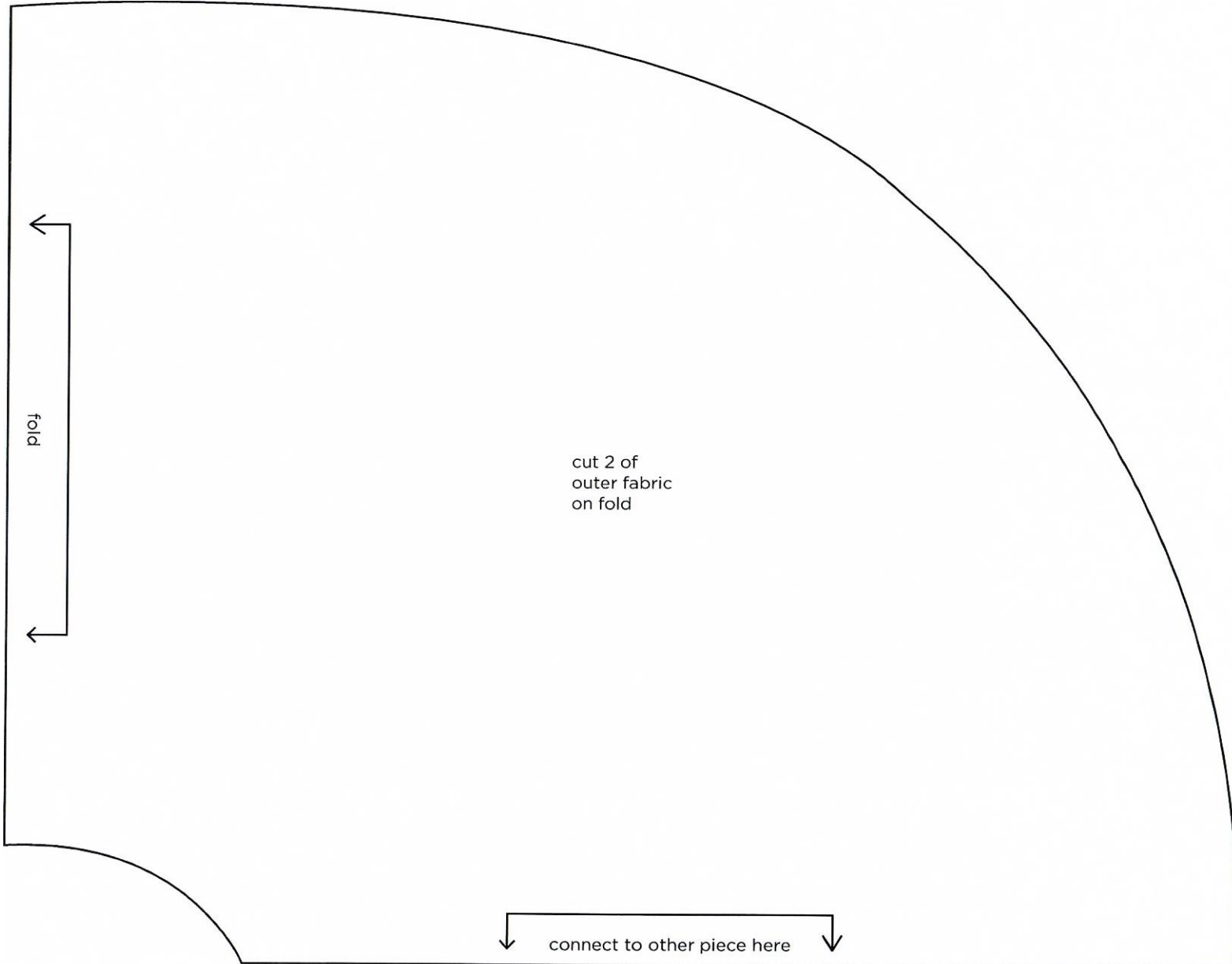
3/8-inch seam allowance for seams unless noted



You may watch this video for reference: <https://www.youtube.com/watch?v=feGTn58jcBM>

1. Cut 1 from fabric
2. Cut 1 from contrasting fabric
3. With right sides together stitch together leaving approximately a 5-inch opening at top.

Directions continued next page



4. Clip inside curve (around neck) being careful not to clip into your stitching.
5. Stitch inside curve (around the neck) again to reinforce.
6. Turn right side out and press.
7. Stuff with polyester fiberfill be sure to make very firm
8. Hand stitch closed.

